

ENGINEERS INSTRUCTION

Project: Life Care - Glenrose Court Wattle Wing Upgrade EI No: E-02

Contract: Electrical Services Project No: 56928/2/3

Issued To: Tonkin Schutz Design & Build Date: 26 October 2021

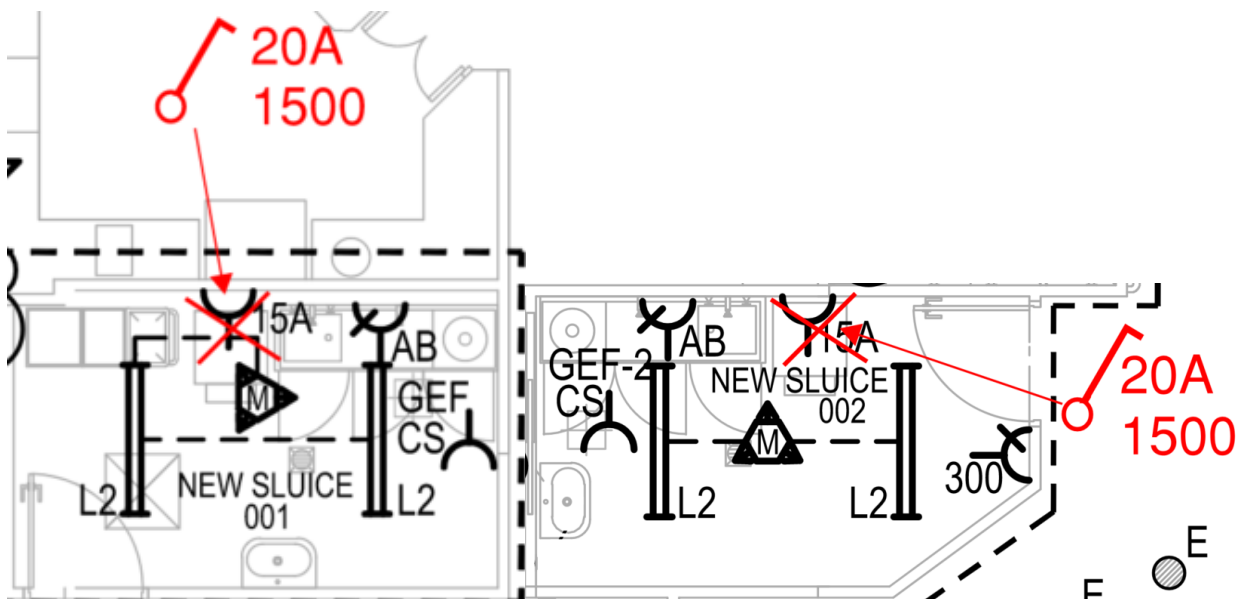
Undertake the works described hereunder.

Nominate if a time or cost variation is applicable.

Title: Pan Sanitiser Power Provisions

REFER TO ELECTRICAL SERVICES DRAWING E-04 REVISION 'B' SNIPPET BELOW:-

- Deletion 2-off 15A power outlet provisions within New Sluice 001 and New Sluice 002.
- Supply and install 2-off 20A Single Phase Isolators for pan sanitisers to New Sluice 001 and New Sluice 002 as shown below.



BESTEC Pty Ltd

DOMINIC MACURA

Distribution List:-

- Life Care Corporate Services – Mr G Maughan
- Marchese Partners – Ms L Garcia Almanza