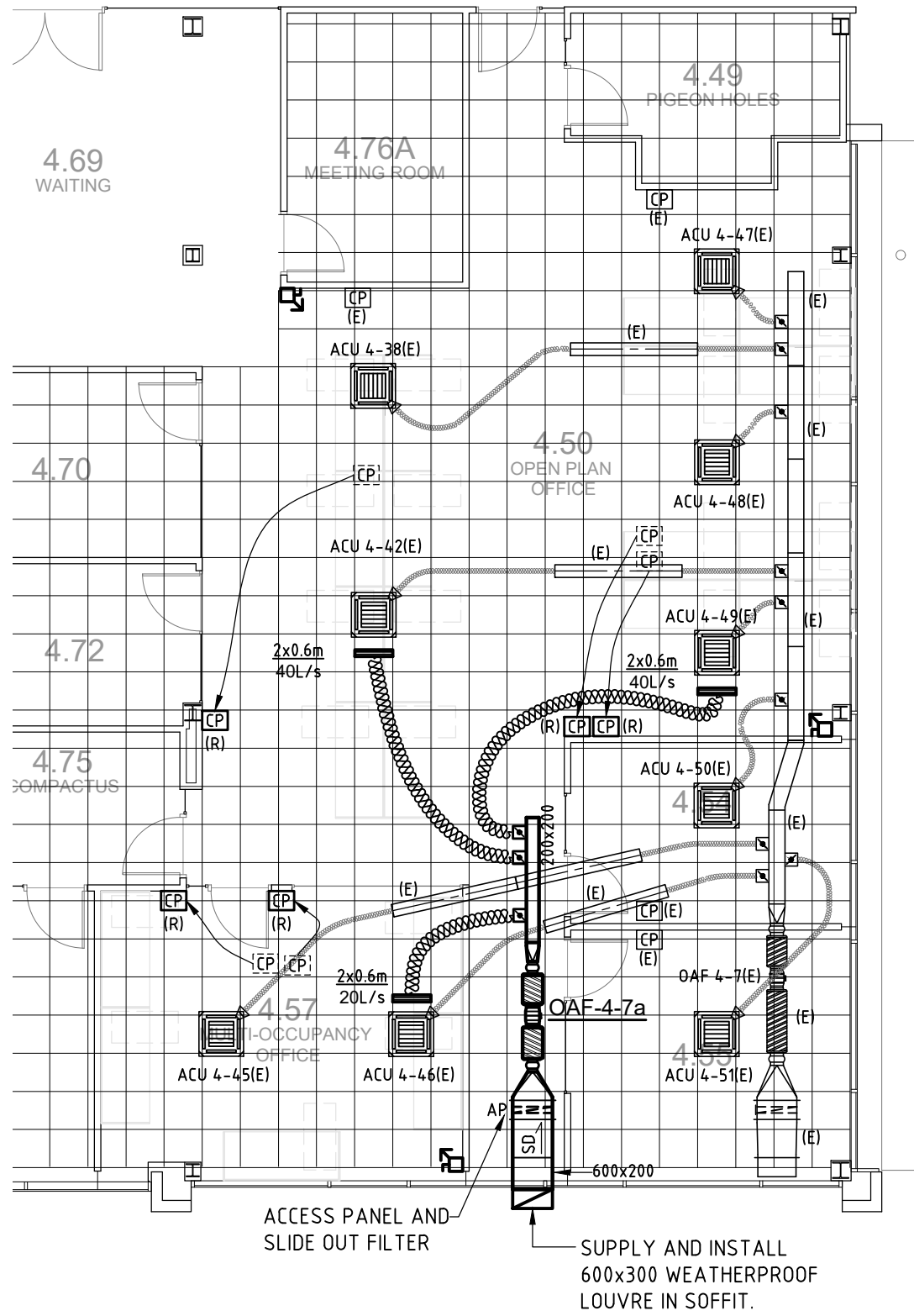
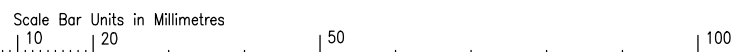


G:\2021\Projects\21176 Flinders Uni EPSW College Front, Education Building Level 4\Drawings\M1.dwg 19/10/2021 10:16:25 AM



PLAN 1:100



LEGEND

DUCTWORK & SYMBOLS

- SHEET METAL DUCTWORK, SIZE AS SHOWN, CLEAR INTERNAL, FIRST DIMENSION IS SIDE IN VIEW
- CIRCULAR SHEET METAL DUCTWORK, INSULATE AS SHOWN ON DRAWING
- DUCT SET-DOWN IN DIRECTION OF AIR FLOW
- SPIGOT WITH BUTTERFLY DAMPER
- $\phi 200$ FLEXIBLE DUCTWORK WITH ACOUSTIC INTERNAL INSULATION
- FLEXIBLE DUCTWORK - EXISTING
- CONTROL PANEL
- MOTION SENSOR
- LINEAR SLOT DIFFUSER
a x b
* L/s
a = No. SLOTS x b = LENGTH,
* = No. IN LITRES PER SECOND

REGISTERS & GRILLES

FANS AND EQUIPMENT

- AC CEILING CASSETTE AIR CONDITIONER
- OAF OUTDOOR AIR FAN C/W ATTENUATORS

ALTERATIONS KEY

- NEW ITEM
- (E) EXISTING ITEM RETAINED
- (D) EXISTING ITEM REMOVED OR REDUNDANT
- (R) EXISTING ITEM RELOCATED
- (R) NEW LOCATION OF RELOCATED ITEM

ABBREVIATIONS

- ACU AIR CONDITIONING UNIT
- AP ACCESS PANEL
- OAF OUTDOOR AIR FAN

MECHANICAL SPECIFICATION NOTES

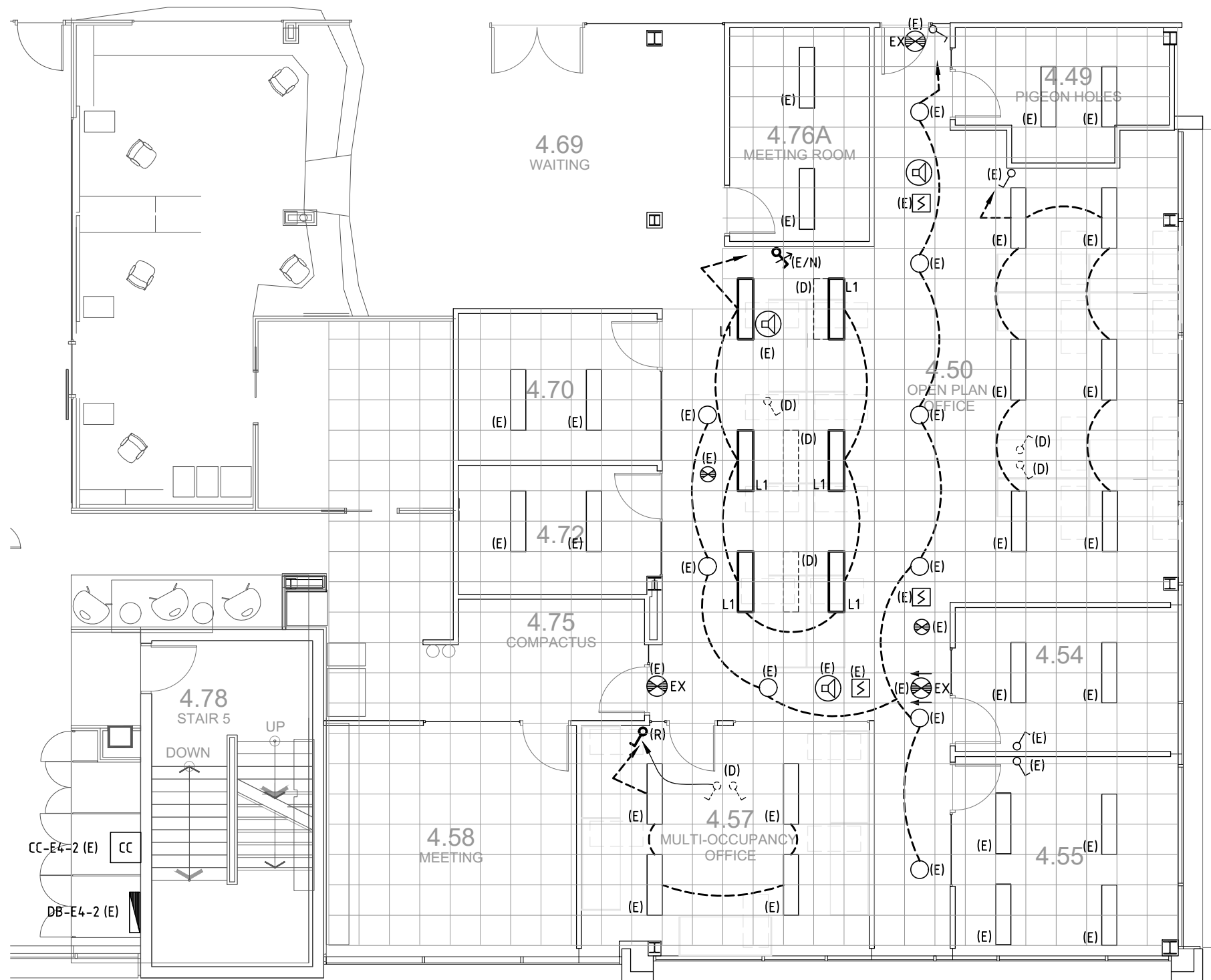
THE MECHANICAL INSTALLATION SHALL INCLUDE, BUT NOT BE LIMITED TO THE WORK SHOWN ON THE DRAWINGS AND SPECIFIED HEREIN, INCLUDING SUPPLY, INSTALLATION, TESTING, COMMISSIONING, CERTIFICATION, MANUALS, MAINTENANCE, WARRANTY AND DEFECT LIABILITY PERIOD FOR THE AGREED TIME FRAME OF MATERIALS, LABOUR AND EQUIPMENT.

1. MECHANICAL INSTALLATION SHALL COMPLY WITH:
 - AS/NZS 3000
 - NATIONAL CONSTRUCTION CODE (BCA) AND RELEVANT AUTHORITY REQUIREMENTS.
2. TENDERERS SHALL INSPECT THE SITE AND FAMILIARIZE THEMSELVES WITH SITE AND LOCAL CONDITIONS AFFECTING THE CONTRACT WORKS AND SATISFIED THEMSELVES AS TO THE TRUE NATURE AND EXTENT OF THE CONTRACT WORKS.
3. MATERIALS AND MANUFACTURED ARTICLES SHALL BE THE BEST OF THEIR RESPECTIVE KINDS AND WORKMANSHIP SHALL CONFORM TO BEST TRADE PRACTICE.
4. COORDINATE SUITABLE TIME TO CARRY OUT THE WORK WITH THE OCCUPANTS.
5. SUPPLY AND INSTALL NEW IN-LINE OUTDOOR AIR FAN COMPLETE WITH ATTENUATORS, DUCTWORK, SLIDE OUT AIR FILTER, LINEAR SLOT DIFFUSERS AND WEATHERPROOF LOUVRE. FAN SHOULD BE FANTECH WHISPER JET SERIES WJ-150RILKIT OR EQUIVALENT.
6. SUPPLY AND INSTALL MSC SERIES MOTION SENSORS WHERE SHOWN ON DRAWING. THE FAN SHALL START WHEN ANY OF THE MOTION SENSORS IS ACTIVATED. IF MOVEMENT IS NOT DETECTED FOR 20 MINUTES THE FAN SHALL STOP.
7. INSTALL OUTDOOR CONDENSING UNIT ON GALVANISED STEEL TOP HAT FIXED TO CONCRETE PLINTH WITH RUBBER IN SHEAR ANTI VIBRATION ISOLATION MOUNTS.
8. RELOCATE CONTROL PANELS WHERE SHOWN ON DRAWING.
9. PROVIDE ELECTRICAL CERTIFICATE OF COMPLIANCE.
10. TEST AND COMMISSION THE INSTALLATION AND RECORD COMMISSIONING RESULTS.
11. PROVIDE AS-INSTALLED DRAWINGS, PREPARED USING CAD. DWG AUTOCAD FILES OF TENDER DRAWINGS WILL BE PROVIDED ON REQUEST.
12. PROVIDE OPERATION AND MAINTENANCE MANUALS. INCLUDE EMERGENCY CONTACTS, DESCRIPTION OF THE WORKS, MANUFACTURERS LITERATURE, MAINTENANCE INSTRUCTIONS AND SCHEDULES, COMMISSIONING RESULTS, CERTIFICATES OF COMPLIANCE, WARRANTIES, AS INSTALLED DRAWINGS AND CD CONTAINING COPY OF THE ENTIRE MANUAL. MANUAL SHALL BE SUBMITTED IN ELECTRONIC FORMAT AS ONE PDF DOCUMENT COMPLETE WITH ALL REQUIRED LITERATURE.
13. SUBMIT MANUAL FOR REVIEW PRIOR TO PROJECT COMPLETION.
14. PROVIDE ON-SITE TRAINING TO STAFF.
15. SERVICE AND MAINTAIN THE INSTALLATION DURING THE DEFECTS LIABILITY PERIOD AT MINIMUM 3 MONTHLY INTERVALS, INCLUDING ONE INSPECTION AT END OF DEFECTS LIABILITY PERIOD.
16. RECTIFY OMISSIONS AND DEFECTS DURING THE DEFECTS LIABILITY PERIOD.

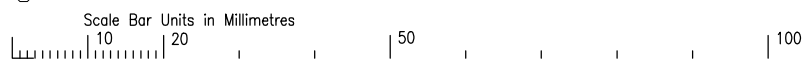
TENDER ISSUE

ISSUED FOR TENDER		19.10.2021
REV. DESCRIPTION	DATE	
ABN: 87 616 441 368 ACN: 616 441 368 T (08) 8232 3737 E admin@trinamic.com.au www.trinamic.com.au 160 Halifax Street Adelaide SA 5000 PO Box 7048 Hutt st. Adelaide SA 5000		CONSULTANTS
BUILDER MUST CHECK ALL DIMENSIONS ON THE SITE BEFORE COMMENCING ANY WORK OR MAKING ANY SHOP DRAWINGS WHICH MUST BE SUBMITTED & APPROVED BEFORE MANUFACTURE THIS DRAWING IS THE PROPERTY OF THE ENGINEERS AND IS SUBJECT TO RETURN ON REQUEST		
JOB FLINDERS UNIVERSITY EDUCATION BUILDING, LEVEL 4 EPSW COLLEGE FRONT		
DRAWING MECHANICAL SERVICES LAYOUT		
SCALE	1:100	@ SHEET SIZE A3
DESIGNED	DRAWN	CHECKED
AJ	AJ	EB
	JOB No.	DRAWING No.
	21176	M1
FILE NAME	No. IN SET	1 OF 1



G:\2021\Projects\21176 Flinders Uni EPSW College Front, Education Building Level 4\Drawings\E1.dwg 19/10/2021 10:00:15 AM



PLAN 1:100



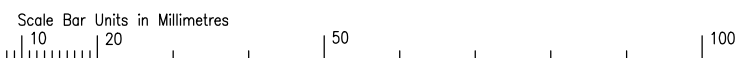
TENDER ISSUE

ISSUED FOR TENDER		19.10.2021	
REV.	DESCRIPTION	DATE	
		ABN: 87 616 441 368 ACN: 616 441 368 T (08) 8232 3737 E admin@trinamic.com.au www.trinamic.com.au 160 Halifax Street Adelaide SA 5000 PO Box 7048 Hutt st. Adelaide SA 5000	
		BUILDER MUST CHECK ALL DIMENSIONS ON THE SITE BEFORE COMMENCING ANY WORK OR MAKING ANY SHOP DRAWINGS WHICH MUST BE SUBMITTED & APPROVED BEFORE MANUFACTURE THIS DRAWING IS THE PROPERTY OF THE ENGINEERS AND IS SUBJECT TO RETURN ON REQUEST	
JOB FLINDERS UNIVERSITY EDUCATION BUILDING, LEVEL 4 EPSW COLLEGE FRONT			
DRAWING ELECTRICAL SERVICES LIGHTING LAYOUT			
SCALE 1:100		@ SHEET SIZE A3	
DESIGNED DW	DRAWN DW	CHECKED EB	
	JOB No. 21176	DRAWING No. E1	REV. -
	FILE NAME	No. IN SET 1 OF 4	

SPECIFICATION NOTES

1. THE ELECTRICAL INSTALLATION SHALL INCLUDE, BUT NOT BE LIMITED TO THE WORK SHOWN ON THE DRAWINGS AND SPECIFIED HEREIN, INCLUDING SUPPLY, INSTALLATION, DESIGN, TESTING, COMMISSIONING, CERTIFICATION, MANUALS, MAINTENANCE, WARRANTY AND DEFECT LIABILITY PERIOD FOR THE AGREED TIME FRAME OF MATERIALS, LABOUR AND EQUIPMENT.
2. ELECTRICAL AND TELECOMMUNICATIONS INSTALLATION SHALL COMPLY WITH:
 - AS/NZS 3000
 - AS/NZS 11801.1
 - AS/ACIF S009
 - NATIONAL CONSTRUCTION CODE (BCA) AND RELEVANT AUTHORITY REQUIREMENTS.
3. READ ELECTRICAL SERVICES DRAWINGS IN CONJUNCTION WITH:
 - ARCHITECTURAL DRAWINGS AND NOTES.
 - STRUCTURAL AND CIVIL DRAWINGS AND NOTES.
 - HYDRAULIC AND MECHANICAL SERVICES DRAWINGS AND NOTES.
4. TENDERERS SHALL INSPECT THE SITE AND FAMILIARIZE THEMSELVES WITH SITE AND LOCAL CONDITIONS AFFECTING THE CONTRACT WORKS AND SATISFIED THEMSELVES AS TO THE TRUE NATURE AND EXTENT OF THE CONTRACT WORKS.
5. INCLUDE TO DEMOLISH AND COMPLETELY REMOVE REDUNDANT OUTLETS AND MAKE GOOD CIRCUITS WHERE CIRCUIT CONTINUES TO OTHER AREAS, ROOMS AND OUTLETS.
6. MATERIALS AND MANUFACTURED ARTICLES SHALL BE THE BEST OF THEIR RESPECTIVE KINDS AND WORKMANSHIP SHALL CONFORM TO BEST TRADE PRACTICE.
7. COORDINATE SUITABLE TIME TO CARRY OUT THE WORK WITH THE OCCUPANTS.
8. RETAIN EXISTING ELECTRICAL AND TELECOMMUNICATIONS OUTLETS, ACCESSORIES AND LIGHT FITTINGS UNLESS SHOWN AS DELETED OR RELOCATED.
9. WHERE DELETED, ALLOW TO MAKE GOOD SURFACES AND FINISHES
10. SUPPLY AND INSTALL MATCHING MINIATURE CIRCUIT BREAKERS AND RCBO IN EXISTING DISTRIBUTION BOARD DB- G FOR NEW SUB-CIRCUITS.
11. PROVIDE RCD PROTECTION TO POWER OUTLET CIRCUITS AND LIGHTING CIRCUITS. PROVIDE ONE COMBINATION RCD/CIRCUIT BREAKER (RCBO) FOR EACH CIRCUIT. RCBO SHALL BE ONE POLE WIDTH, SINGLE PHASE TYPE.
12. FIT-OUT THE DISTRIBUTION BOARD WITH SWITCHGEAR, CONTROL GEAR, PROTECTION, CONTROLS, INSTRUMENTATION, SAFETY EQUIPMENT AND ANCILLARY AND INCIDENTAL EQUIPMENT NECESSARY FOR THE COMPLETE INSTALLATION.
13. PROVIDE NEW RCD LOG BOOK AND EMERGENCY LIGHTING LOGBOOK INSIDE SWITCHBOARD. INCLUDE TO RETEST EXISTING CIRCUITS ALONG WITH NEW WITHIN THIS DISTRIBUTION BOARD
14. SUPPLY AND INSTALL NEW LUMINAIRES, EQUIPMENT, ACCESSORIES, OUTLETS AND ASSOCIATED SUB-CIRCUITS AS SHOWN. WHERE EXISTING CIRCUITS ARE TO BE REUSED, TEST IN ACCORDANCE WITH AS/NZS 300, CLAUSE 8.3.3.2 AND CERTIFY AS SATISFACTORY.
15. RELOCATE EXISTING ACCESSORIES, COMPONENTS AND OUTLETS AS INDICATED AND INCLUDE TO EXTEND ASSOCIATED CABLING IN ACCORDANCE WITH AS/NZS 3000.
16. CONNECT MAXIMUM 5x DOUBLE SWITCHED SOCKET OUTLETS TO 1x POWER CIRCUIT AND CONNECT MAXIMUM 20x LIGHTING POINTS TO 1x LIGHTING CIRCUIT.
17. PROVIDE CABLE SUPPORTS FOR NEW CABLING IN CEILING SPACES VIA EITHER CABLE TRAY, CATENARY OR CONDUITS IN ACCORDANCE WITH AS/NZS 3000.
18. RETICULATE CABLES CONCEALED IN CEILING OR WALL CAVITIES WHERE POSSIBLE. EXPOSED CABLING IS NOT ACCEPTABLE. WHERE CABLES CANNOT BE CONCEALED, INSTALL CABLES IN SURFACE MOUNT CONDUIT. SEEK APPROVAL FROM SUPERINTENDENT PRIOR TO INSTALLATION OF ANY EXPOSED CONDUITS AND OBTAIN WRITTEN APPROVAL OF CABLE ROUTE. EXPOSED CONDUITS SHALL BE PAINTED TO MATCH SURROUNDING SURFACES.
19. COORDINATE LOCATIONS AND MOUNTING HEIGHTS AND MARK LOCATIONS OF LUMINAIRES, EQUIPMENT, ACCESSORIES, SWITCHES AND OUTLETS ON SITE WITH OTHER TRADES AND OBTAIN APPROVAL FROM THE PRINCIPAL REGARDING FINAL LOCATIONS PRIOR TO COMMENCING INSTALLATION.
20. CONFIRM RATINGS OF EQUIPMENT WITH OTHER TRADES PRIOR TO COMMENCING INSTALLATION OF OUTLETS, ISOLATING SWITCHES AND SUB CIRCUITS.
21. PROVIDE PENETRATIONS FOR ELECTRICAL SERVICES. SEAL PENETRATIONS THROUGH BUILDING ELEMENTS AFTER INSTALLATION OF THE SERVICE. MAINTAIN RATING OF SMOKE, FIRE AND ACOUSTIC BARRIERS.
22. NOTE: WALLS AND CEILING LININGS AND SWITCHBOARD BACKING PLATES MAY CONTAIN ASBESTOS. REVIEW ASBESTOS REGISTER ON SITE. UNDERTAKE ANY CUTTING OR PENETRATIONS THROUGH ASBESTOS LINED WALLS IN ACCORDANCE WITH INDUSTRY GUIDELINES.
23. CUT, PATCH, TRIM AND MAKE GOOD TO EXISTING CONDITIONS, THE BUILDING STRUCTURE, CEILINGS AND WALLS FOR THE INSTALLATION OF WIRING AND EQUIPMENT.
24. FIT TRIM ANGLES OR ESCUTCHEONS AROUND WIRING PENETRATIONS EXPOSED TO VIEW.
25. INTERNAL OUTLETS AND LIGHT SWITCHES SHALL BE CLIPSAL C2000 RANGE UNLESS SHOWN OTHERWISE. SWITCHES SHALL HAVE 20A UNIVERSAL SWITCH MECHANISMS SECURED WITH RETAINING SCREWS.
26. PROVIDE IPA STUDS TO NEW OUTLETS, ISOLATING SWITCHES AND LIGHT SWITCHES IDENTIFYING THEIR SUPPLY DISTRIBUTION BOARD, POLE NUMBER AND PHASE COLOUR. PROVIDE CORRESPONDING IPA STUDS TO ESCUTCHEON PANEL IN DB.
27. MODIFY EXISTING FIRE DETECTION TO SUIT PROPOSED LAYOUT AS INDICATED AND REQUIRED BY CODE
28. PROVIDE CAT6A TELECOMMUNICATIONS HORIZONTAL WIRING FROM EXISTING TELECOMMUNICATIONS CABINET TO NEW RJ45 TELECOMMUNICATIONS OUTLETS WHERE SHOWN.
29. TEST AND COMMISSION THE ELECTRICAL AND TELECOMMUNICATIONS SYSTEMS.
30. PROVIDE ELECTRICAL CERTIFICATE OF COMPLIANCE, CERTIFICATE OF COMPLIANCE WITH ESSENTIAL SAFETY PROVISIONS FOR EMERGENCY LIGHTING, RCD TEST RESULTS, EMERGENCY LIGHTING TEST RESULTS, TELECOMMUNICATIONS TEST RESULTS, ACMA TCA1 FORM AND COMMISSIONING AND MAINTENANCE TEST RESULTS.
31. PROVIDE TYPED SWITCHBOARD LEGEND CARD IN DB. IDENTIFY SUB MAINS CABLE SIZE AND INCLUDE INFORMATION ON LEGEND CARD.
32. PROVIDE AS-INSTALLED DRAWINGS PREPARED USING CAD, WITH CIRCUIT OR ITEM NUMBER ADJACENT EACH ITEM INSTALLED IN THE PROJECT. DWG AUTOCAD FILES OF TENDER DRAWINGS WILL BE PROVIDED ON REQUEST.
33. PROVIDE OPERATION AND MAINTENANCE MANUALS. INCLUDE EMERGENCY CONTACTS, DESCRIPTION OF THE WORKS, MANUFACTURERS LITERATURE, MAINTENANCE INSTRUCTIONS AND SCHEDULES, COMMISSIONING RESULTS, CERTIFICATES OF COMPLIANCE, WARRANTIES, AS INSTALLED DRAWINGS, AND CD CONTAINING COPY OF THE ENTIRE MANUAL. MANUAL SHALL BE SUBMITTED IN ELECTRONIC FORMAT AS ONE PDF DOCUMENT COMPLETE WITH ALL REQUIRED LITERATURE.
34. SUBMIT MANUAL FOR REVIEW PRIOR TO PROJECT COMPLETION.
35. PROVIDE ON SITE TRAINING TO STAFF.
36. SERVICE AND MAINTAIN THE INSTALLATION DURING THE DEFECTS LIABILITY PERIOD AT MINIMUM 3 MONTHLY INTERVALS, INCLUDING ONE INSPECTION AT END OF DEFECTS LIABILITY PERIOD.
37. RECTIFY OMISSIONS AND DEFECTS DURING THE DEFECTS LIABILITY PERIOD.

G:\2021\Projects\21176 Flinders Uni EPSW College Front, Education Building Level 4\Drawings\E3.dwg 19/10/2021 8:21:12 AM



TENDER ISSUE

ISSUED FOR TENDER		19.10.2021	
REV. DESCRIPTION	DATE		
		ABN: 87 616 441 368 ACN: 616 441 368 T (08) 8232 3737 E admin@trinamic.com.au www.trinamic.com.au 160 Halifax Street Adelaide SA 5000 PO Box 7048 Hutt st. Adelaide SA 5000	
BUILDER MUST CHECK ALL DIMENSIONS ON THE SITE BEFORE COMMENCING ANY WORK OR MAKING ANY SHOP DRAWINGS WHICH MUST BE SUBMITTED & APPROVED BEFORE MANUFACTURE THIS DRAWING IS THE PROPERTY OF THE ENGINEERS AND IS SUBJECT TO RETURN ON REQUEST			
JOB FLINDERS UNIVERSITY EDUCATION BUILDING, LEVEL 4 EPSW COLLEGE FRONT			
DRAWING ELECTRICAL SERVICES SPECIFICATION NOTES			
SCALE	N.T.S.	@ SHEET SIZE	A3
DESIGNED DW	DRAWN DW	CHECKED EB	
JOB No.	DRAWING No.	REV.	
21176	E3	-	
FILE NAME	No. IN SET	3 OF 4	

LEGEND

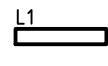
ELECTRICAL DISTRIBUTION

 DISTRIBUTION BOARD


 2 CHANNEL 150mm SKIRTING DUCT


LINEAR LUMINAIRES

LENGTH TO SCALE

L1  30W LED DIMMABLE FLAT PANEL
ROBUS Ref: RDL30403012UGR-01 + RMP30-PSU

EMERGENCY LUMINAIRES


 EMERGENCY LUMINAIRE, 1x2W SINGLE LED. NON-MAINTAINED.
C0/C90=D40 STANILITE SPITFIRE P-RANGE, RECESS IN CEILING

EX  EXIT LUMINAIRE WITH RUNNING MAN PICTOGRAM. 4W LED
MAINTAINED OPERATION. C0/C90=D3.2.
STANILITE QUICKFIT P-RANGE SURFACE MOUNT CEILING/WALL
(→) DIRECTIONAL ARROW

 EX EXIT LUMINAIRE c/w DIRECTIONAL ARROWS, MAINTAINED


LIGHTING CONTROL

----- LIGHT SWITCH CIRCUIT


 LIGHT SWITCH - ONE WAY

 LIGHT SWITCH WITH DIMMER


 LIGHT SWITCH - TWO WAY

 MULTIGANG SWITCH PLATE
n DENOTES NUMBER OF SWITCHES

SWITCHED SOCKET OUTLETS

 a SINGLE SWITCHED SOCKET OUTLET - 1 PHASE 10A UNLESS
SHOWN OTHERWISE.
a = CURRENT RATING IF NOT 10A

SS  15A STARTER SOCKET FOR SOFT WIRING.
WIRED ON DEDICATED CIRCUIT

 a DOUBLE SWITCHED SOCKET OUTLET - 1 PHASE 10A UNLESS
SHOWN OTHERWISE.
a = CURRENT RATING IF NOT 10A

ISOLATING SWITCHES

 a ISOLATING SWITCH - 1 PHASE IP66
a = CURRENT RATING

CIRCUITS

+ SWITCHED SOCKET OUTLET OR SWITCH ON INDIVIDUAL CIRCUIT
(ONE OUTLET OR SWITCH/CIRCUIT)

+ SWITCHED SOCKET OUTLET OR SWITCH ON DEDICATED CIRCUIT
(OUTLETS OR SWITCHES SERVING SIMILAR EQUIPMENT Eg. COMPUTER, FANS)

EQUIPMENT

 SP FLOOR TO CEILING SERVICE POLE TO MATCH EXISTING.
INCLUDE FOR ABOVE CEILING FIXING BRACKETS


GENERAL

A  WORKSTATION TO BE FITTED WITH SOFT WIRING AND OUTLETS
EACH STATION TO INCLUDE 2 x  AND 2 x 

TELECOMMUNICATIONS DISTRIBUTION

CC  COMMUNICATIONS CABINET

TELECOMMUNICATION OUTLETS

 TELECOMMUNICATIONS OUTLET, RJ45 SOCKET,
n DENOTES NUMBER OF OUTLETS ON ONE PLATE

SERVICE REFERENCE INFORMATION

'nn'V/'nn'A DENOTES VOLTAGE & AMPERAGE

#mm #C+E DENOTES CABLE SIZE & CORE DETAILS

CU. DENOTES EQUIPMENT REFERENCE

ALTERATIONS KEY

 NEW ITEM

(E)  EXISTING ITEM RETAINED

(E/N)  EXISTING ITEM REPLACED WITH NEW

(D)  EXISTING ITEM REMOVED OR REDUNDANT

 EXISTING ITEM RELOCATED

(R)  NEW LOCATION OF RELOCATED ITEM

MOUNTING ABBREVIATIONS

AB 150mm ABOVE BENCH TOP LEVEL

BB 300mm BELOW BENCH TOP LEVEL

CM CEILING MOUNTED

HL MOUNTED AT HIGH LEVEL TYPICALLY
200mm DOWN FROM CEILING

CV INSIDE CEILING VOID

RM ROOF MOUNTED

MOUNTING HEIGHTS

UNLESS SHOWN OTHERWISE

LIGHT SWITCHES 1000 AFL

SWITCHED SOCKET OUTLETS 300 AFL

TELECOMMUNICATIONS OUTLETS 300 AFL

MATV OUTLETS 300 AFL

FIRE ALARM DETECTION


 SMOKE DETECTOR (PHOTOELECTRIC),
EXPOSED OR SURFACE MOUNTED

 RECESSED LOUD SPEAKER

G:\2021\Projects\21176 Flinders Uni EPSW College Front, Education Building Level 4\Drawings\E4.dwg 19/10/2021 10:00:08 AM

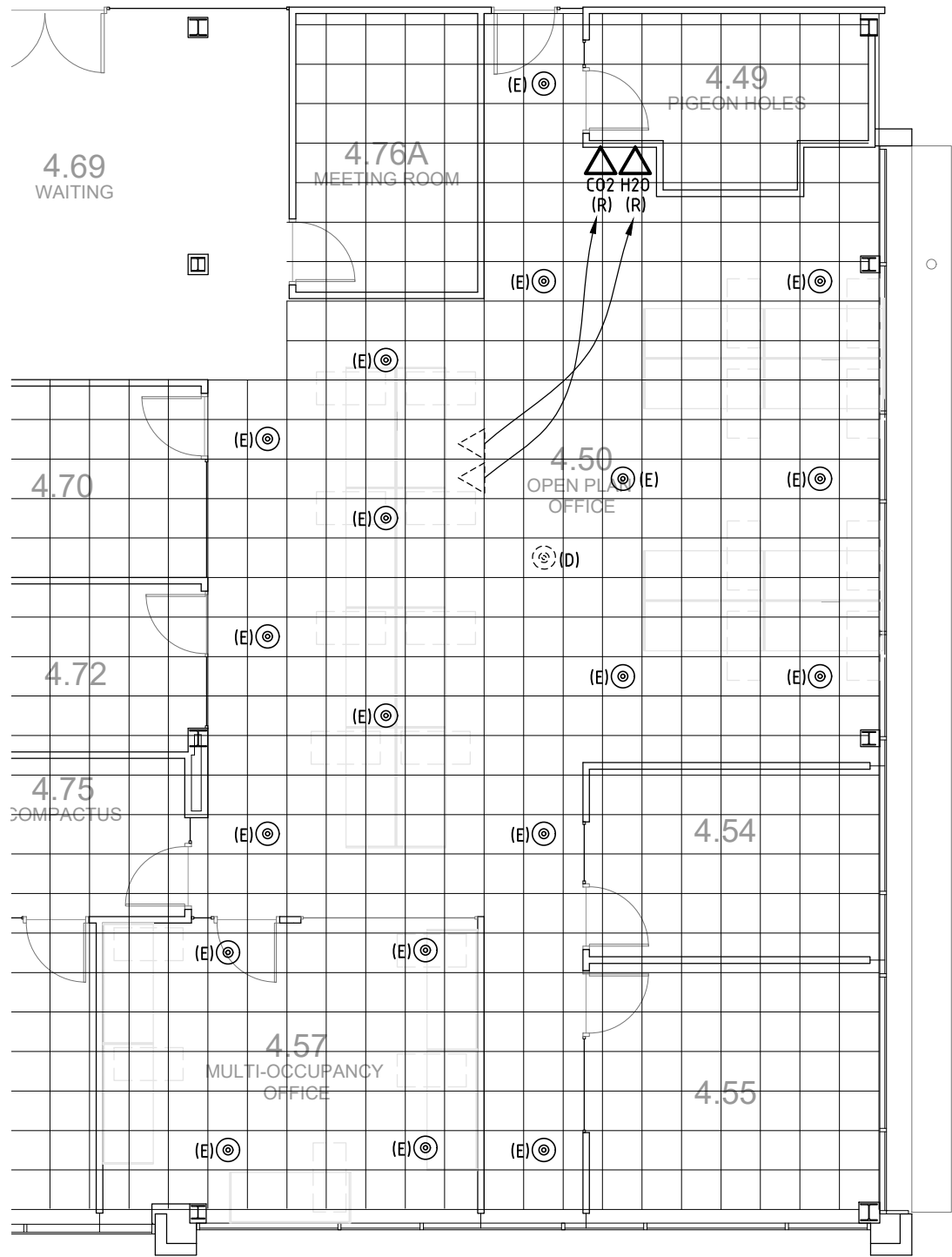
Scale Bar Units in Millimetres

0 10 20 50 100

ISSUED FOR TENDER		19.10.2021	
REV.	DESCRIPTION	DATE	
 TRINAMIC CONSULTANTS ABN: 87 616 441 368 ACN: 616 441 368 T (08) 8232 3737 E admin@trinamic.com.au www.trinamic.com.au 160 Halifax Street Adelaide SA 5000 PO Box 7048 Hutt st. Adelaide SA 5000			
BUILDER MUST CHECK ALL DIMENSIONS ON THE SITE BEFORE COMMENCING ANY WORK OR MAKING ANY SHOP DRAWINGS WHICH MUST BE SUBMITTED & APPROVED BEFORE MANUFACTURE THIS DRAWING IS THE PROPERTY OF THE ENGINEERS AND IS SUBJECT TO RETURN ON REQUEST			
JOB FLINDERS UNIVERSITY EDUCATION BUILDING, LEVEL 4 EPSW COLLEGE FRONT			
DRAWING ELECTRICAL SERVICES LEGEND			
SCALE	N.T.S.	@ SHEET SIZE	A3
DESIGNED DW	DRAWN DW	CHECKED EB	
JOB No.	DRAWING No.	REV.	
21176	E4	-	
FILE NAME	No. IN SET	4 OF 4	

TENDER ISSUE

G:\2021\Projects\21176 Flinders Uni EPSW College Front, Education Building Level 4\Drawings\F1.dwg 19/10/2021 9:58:26 AM



PLAN 1:100

LEGEND

- ⊙ SPRINKLER HEAD, CEILING MOUNTED
- △^x FIRE EXTINGUISHER
H₂O - WATER
CO₂ - CARBON DIOXIDE

ALTERATIONS KEY



- (E) EXISTING ITEM RETAINED
- (D) EXISTING ITEM REMOVED OR REDUNDANT
- (R) EXISTING ITEM RELOCATED
- (R) NEW LOCATION OF RELOCATED ITEM

NOTES

1. CONFIRM ALL LOCATIONS ON SITE PRIOR TO INSTALLATION.
2. COORDINATE WITH ALL OTHER TRADES.
3. DISCONNECT AND REMOVE SPRINKLER. CAP AND SEAL PIPEWORK.
4. SPRINKLER DISTRIBUTION PIPEWORK SHALL BE DESIGNED TO AS 2118.1.
5. RELOCATE EXISTING FIRE EXTINGUISHERS AND INSTALL IN ACCORDANCE TO AS 2444 REQUIREMENTS, INCLUDING STATUTORY SIGNAGE.



TENDER ISSUE

ISSUED FOR TENDER		19.10.2021	
REV.	DESCRIPTION	DATE	
			
		ABN: 87 616 441 368 ACN: 616 441 368 T (08) 8232 3737 E admin@trinamic.com.au www.trinamic.com.au 160 Halifax Street Adelaide SA 5000 PO Box 7048 Hutt st. Adelaide SA 5000	
BUILDER MUST CHECK ALL DIMENSIONS ON THE SITE BEFORE COMMENCING ANY WORK OR MAKING ANY SHOP DRAWINGS WHICH MUST BE SUBMITTED & APPROVED BEFORE MANUFACTURE THIS DRAWING IS THE PROPERTY OF THE ENGINEERS AND IS SUBJECT TO RETURN ON REQUEST			
JOB FLINDERS UNIVERSITY EDUCATION BUILDING, LEVEL 4 EPSW COLLEGE FRONT			
DRAWING FIRE SERVICES LAYOUT			
SCALE 1:100		@ SHEET SIZE A3	
DESIGNED AJ	DRAWN AJ	CHECKED EB	
 JOB No. 21176		DRAWING No. F1	REV. -
FILE NAME		No. IN SET	1 OF 1