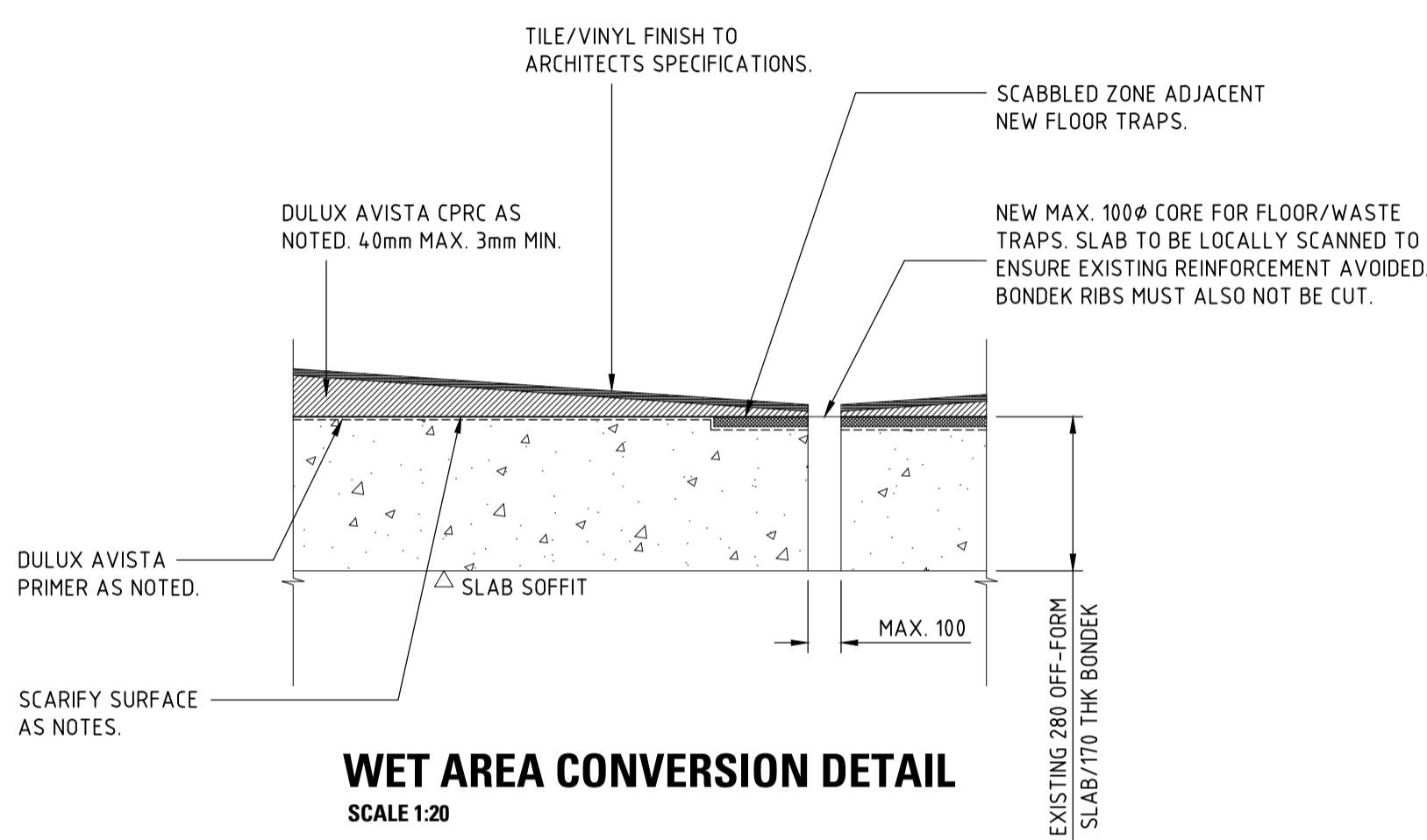


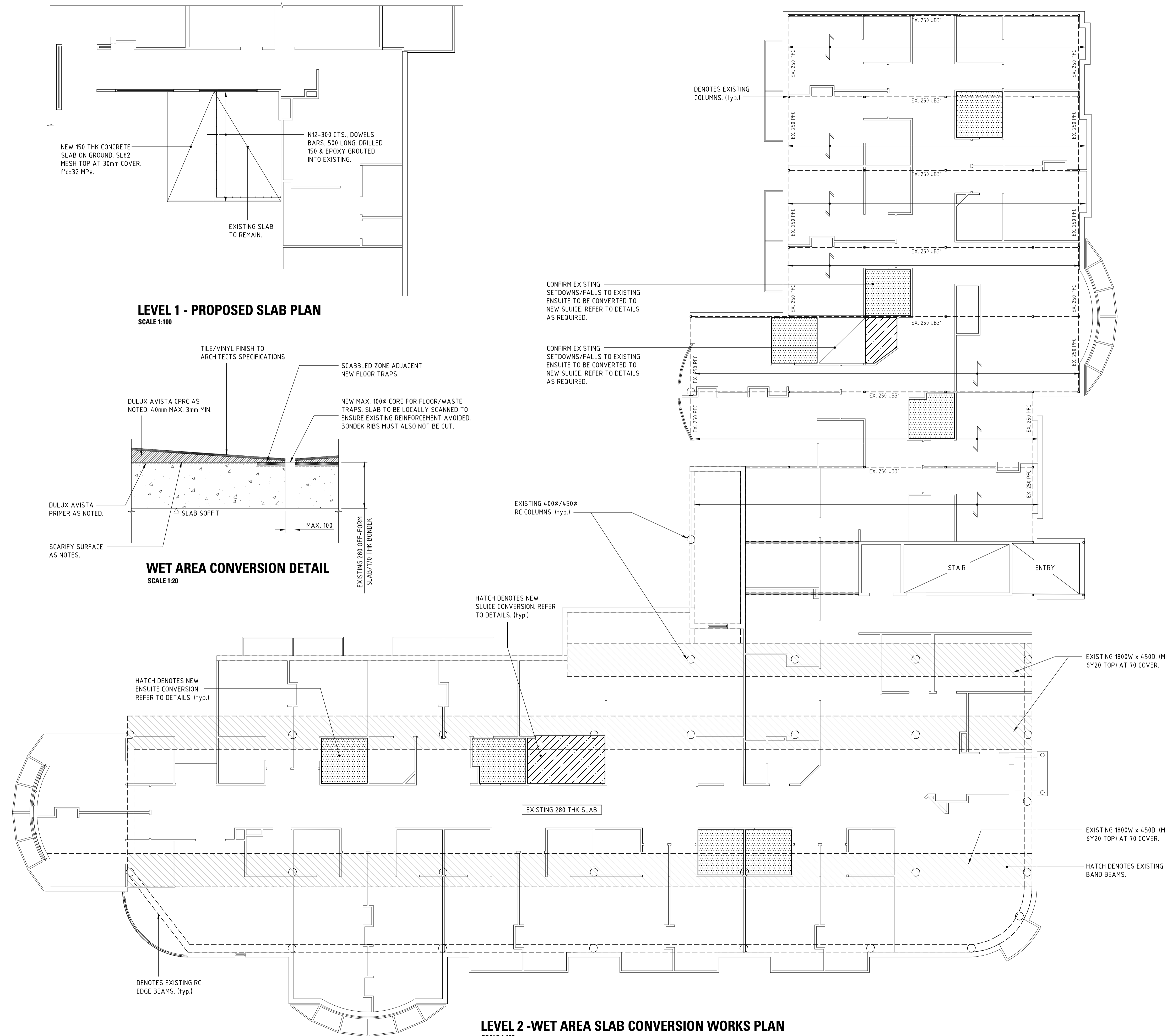
LEVEL 1 - PROPOSED SLAB PLAN

SCALE 1:100



WET AREA CONVERSION DETAIL

SCALE 1:20



LEVEL 2 - WET AREA SLAB CONVERSION WORKS PLAN

SCALE 1:100

SUSPENDED SLAB NOTES:

- EXISTING 170 THICK CONCRETE SLAB ON BONDEK II, REINFORCED WITH RF72 FABRIC TOP.
- SLAB THICKNESSES SHOWN ARE MINIMUM STRUCTURAL THICKNESS REQUIREMENTS.

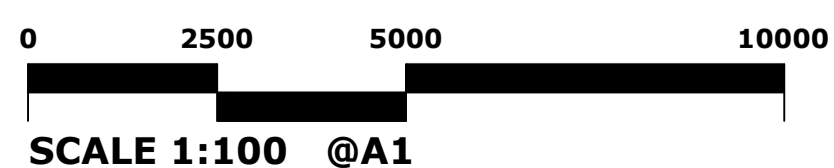
LEGEND:

- ??? DENOTES SLAB/BAND BEAM DEPTH
- == INDICATES LOAD BEARING WALL
- ↔ DENOTES FLOOR DECKING SPANNING DIRECTION OF EXISTING BONDEK

NEW WET AREA CONVERSION

- CORES TO BE DRILLED AS REQUIRED FOR NEW FLOOR TRAPS/WASTE. REFER TO NOTES.
- SCABBLE EXISTING SURFACE TO ACHIEVE A SURFACE ROUGHNESS CSP6. LOCALLY SCABBLE AROUND PROPOSED FLOOR TRAPS - MIN 100mm PERIMETER ALL ROUND TO A MAX 10mm DEPTH.
- CLEAN SURFACE & ENSURE FREE OF DUST, OILS ETC. & BLOW CLEAN WITH OIL-FREE COMPRESSED AIR.
- THOROUGHLY SOAK CONCRETE WITH CLEAN WATER. REMOVE EXCESS IMMEDIATELY PRIOR TO PRIMING & ANY WET AREAS WHICH DRY OUT BEFORE APPLICATION OF THE PRIMER ARE TO BE RE-DAMPENED BEFORE CONTINUING.
- THOROUGHLY SCRUB DULUX AVISTA RESURFACING PRIMER (1 PART MODIFIER, 2 PARTS WATER) INTO THE DAMPENED SURFACE. ENSURE COMPLETE COVERAGE INCLUDING EDGES.
- MIX WATER & DULUX AVISTA RESURFACING PRIMER 50:50 TO CREATE 3.5L MIX & ADD TO 20kg BAG OF DULUX AVISTA CONCRETE PATCH REPAIR COMPOUND. MIX IN ACCORDANCE WITH THE MANUFACTURERS TDS. ADJUST VOLUME OF PRODUCT AS REQUIRED TO SUIT AREA OF APPLICATION.
- APPLY MIXED COMPOUND TO PRIMED SURFACE ENSURING PRIMER IS STILL TACKY. THE PRIMING OPERATION MUST BE REPEATED IF THE INITIAL COAT HAS DRIED OUT. APPLY EVENLY BY TROWEL & TAMP IN PLACE WITH WOOD FLOAT TO ENSURE FULL COMPACTION. FALL FROM MAX 40mm AT EDGES TO 3mm AT FLOOR TRAP LOCATIONS (REFER TO ARCHITECT FOR LEVELS). STRIKE OFF TO THE CORRECT LEVEL & FINISH WITH STEEL TROWEL TO FULLY CLOSE THE SURFACE.
- CURE IMMEDIATELY AFTER FINISHING WITH PLASTIC SHEETING OVER.

REFER TO THE MANUFACTURER FOR ANY ADDITIONAL DETAILS.



FOR CONSTRUCTION

Date	Revision	Issue
13.10.21	FOR CONSTRUCTION	02
21.07.21	ISSUE FOR APPROVAL	01
15.07.21	ISSUE FOR APPROVAL	00

PT Design Pty Ltd 141-149 Hould Street Adelaide SA 5000
T [08 8412 4300] E [ptdesign@ptdesign.net.au]

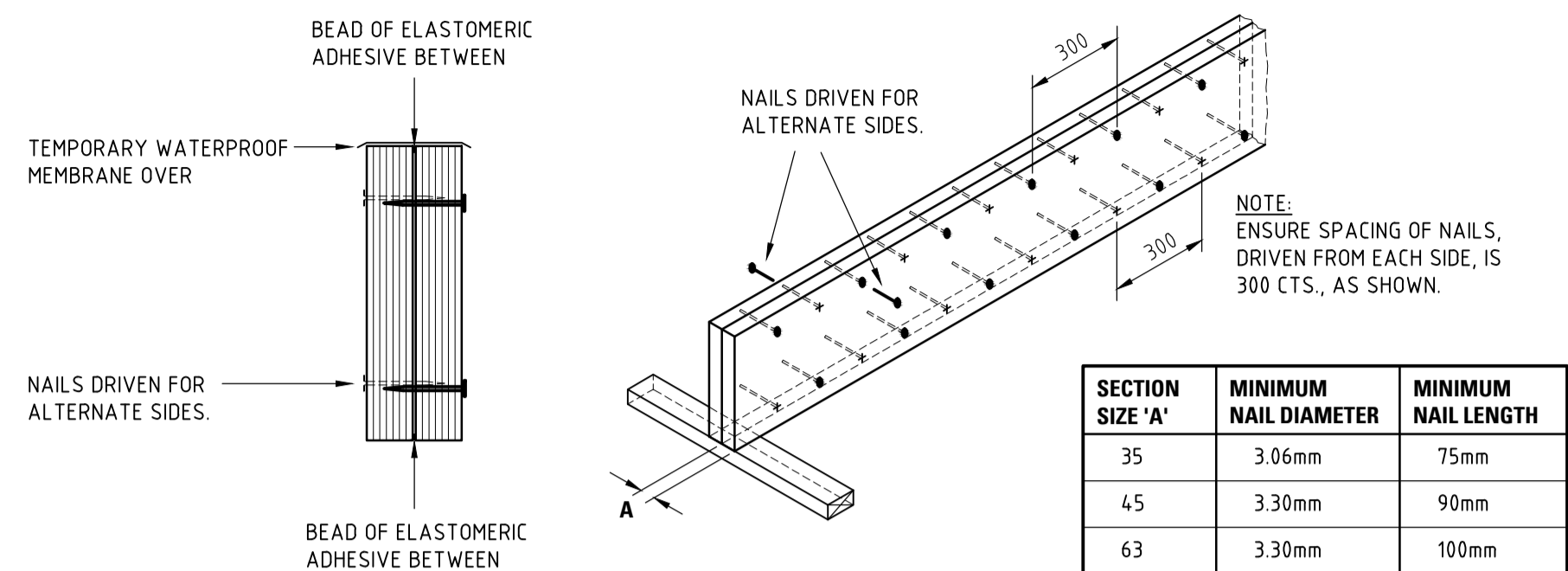
Designed	MB	Drawn	VV
Approved	MB	Date	JUL'21
STRUCTURAL		Sheet	1 of 2

Project
LIFE CARE
550 PORTRUSH ROAD
GLEN OSMOND

Client	LIFE CARE	N	
--------	-----------	---	--

Drawing Title	WET AREA SLAB CONVERSION WORKS PLAN	Scale	1:100
---------------	-------------------------------------	-------	-------

Drawing Number	22402-S100	Issue	02
----------------	------------	-------	----



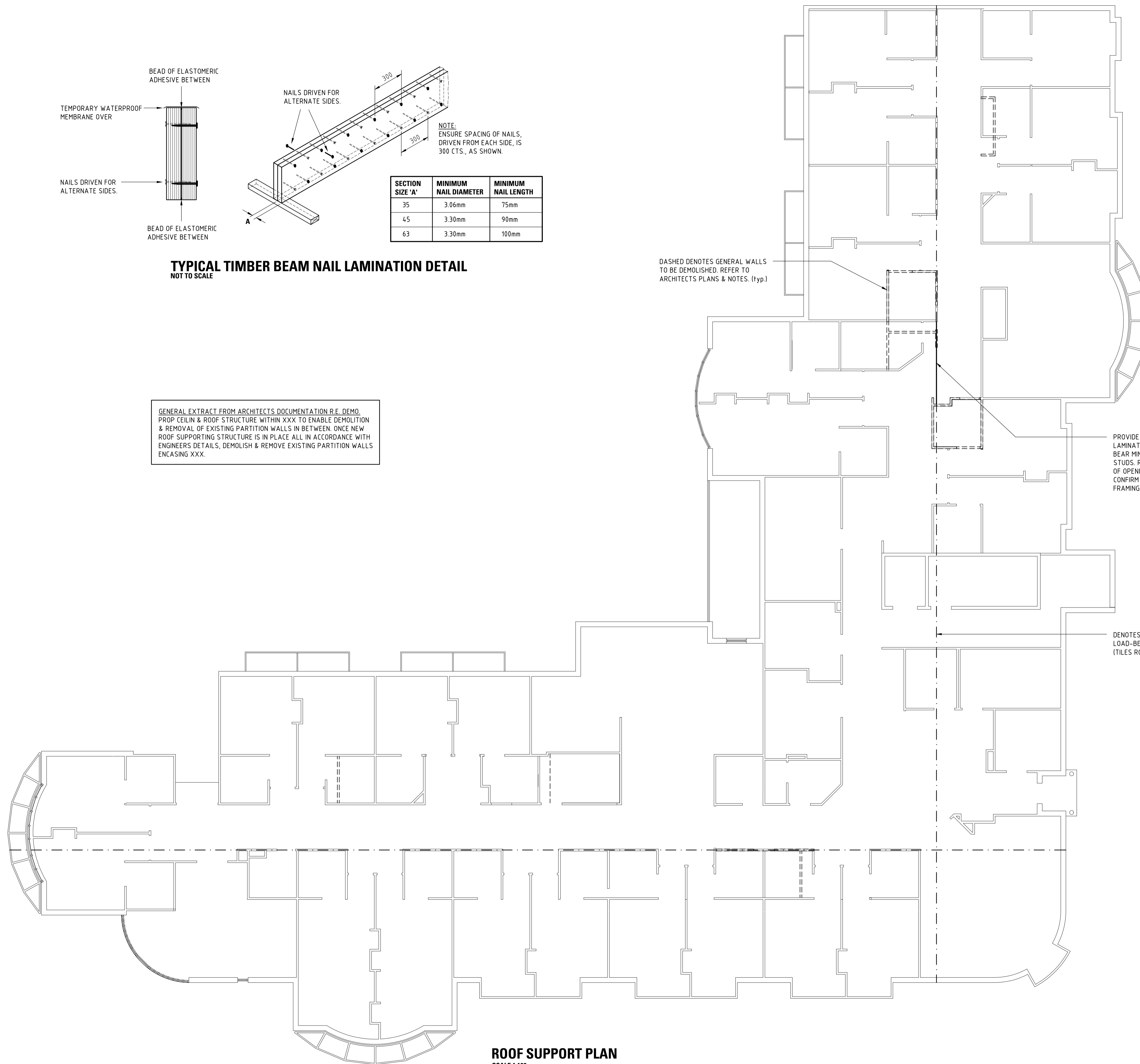
TYPICAL TIMBER BEAM NAIL LAMINATION DETAIL
NOT TO SCALE

DASHED DENOTES GENERAL WALLS TO BE DEMOLISHED. REFER TO ARCHITECTS PLANS & NOTES. (typ.)

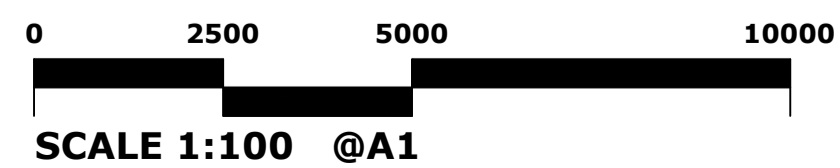
GENERAL EXTRACT FROM ARCHITECTS DOCUMENTATION R.E. DEMO.
PROP CEILIN & ROOF STRUCTURE WITHIN XXX TO ENABLE DEMOLITION & REMOVAL OF EXISTING PARTITION WALLS IN BETWEEN. ONCE NEW ROOF SUPPORTING STRUCTURE IS IN PLACE ALL IN ACCORDANCE WITH ENGINEERS DETAILS, DEMOLISH & REMOVE EXISTING PARTITION WALLS ENCASING XXX.

PROVIDE MIN. 2/300x42 SMART LVL NAIL LAMINATED IN ACCORDANCE WITH DETAIL. BEAR MIN. 35mm ON MIN. 2/90x45 MGP10 STUDS. REST OVER INNER STUDS AT SIDES OF OPENINGS. 4 NAILS TO OUTER STUDS. CONFIRM LOADING CONDITION STAGE WHILE FRAMING/CEILING IS PROPPED AS REQUIRED.

DENOTES POTENTIAL INTERNAL LOAD-BEARING LINE TO TRUSSES OVER (TILES ROOFING), CONFIRM ON SITE. (typ.)



ROOF SUPPORT PLAN
SCALE 1:100



FOR CONSTRUCTION

13.10.21	FOR CONSTRUCTION	01
15.07.21	ISSUE FOR APPROVAL	00
Date	Revision	Issue
PT Design		
PT Design Pty Ltd 141-149 Hould Street Adelaide SA 5000 T [08 8412 4300] E [ptdesign@ptdesign.net.au]		
Designed MB	Drawn VV	
Approved MB	Date JUL'21	
STRUCTURAL	Sheet 2 of 2	
Project LIFE CARE 550 PORTRUSH ROAD GLEN OSMOND		
Client LIFE CARE	N 	
Drawing Title TEMP. ROOF SUPPORT	Scale 1:100	
Drawing Number 22402-S101	Issue 01	